

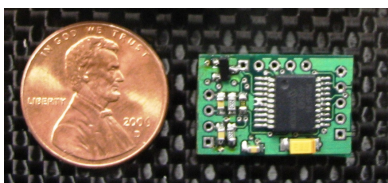
Microprocessor Controlled Strain Gauge Amplifiers MEG

Patent Pending

Our microprocessor controlled strain gauge amplifier is available either as a user programmable or preset version. The amplifier can be supplied as either a bare board or in a lightweight enclosure. Either can use a PC package to view the output of the amplifier through the serial interface. With the same software the end user can configure the programmable unit's gain, offset and temperature compensation.

Applications include the following and many more:

- Gear Levers
- Steering Columns
- Steering Arms
- Pushrods
- Trailing Arms
- Sway Bars



Actual Size of Bare Board

Technical Data

	Programmable Amplifier	Preset Amplifier
Size	.75"x.5"x.18"	.75"x.5"x.18"
Supply Voltage	7-15V	7-15V
Bridge Excitation Voltage	5V	5V
Operating Temperature	0-100°C	0-100°C
Remote PC Scope Software	Yes	Yes
Temperature Compensation	Adjustable from PC	No
Gain	Adjustable from PC	Preset
Offset	Adjustable from PC	Preset
Amplifier Offset Drift	100nV/°C	100nV/°C
Amplifier Gain Drift	100ppm/°C	100ppm/°C
Mass (board only)	1.3g	1.3g
Information for assembly with optional enclosure and autosport connectors		
Size	2.65"x.88"x.58"	2.65"x.88"x.58"
Mass	25g	25g

Windows Software Package (requires interface cable)

Functions available with all models

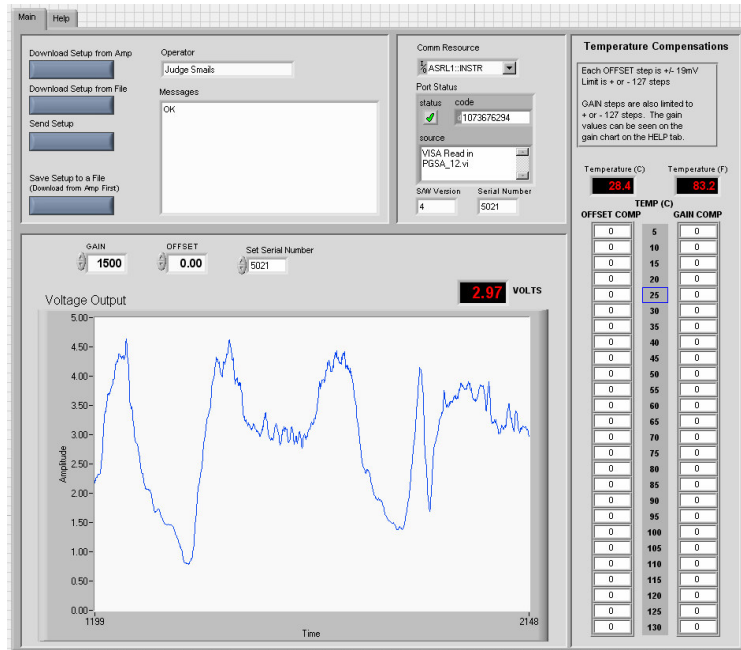
- Real time scope

Functions available with only the Programmable model

- Adjust gain
- Adjust offset
- Adjust temperature compensation
- Setup cloning

PC requirements

- Window XP
- Serial Port
- 256MB RAM
- 5MB free disk space



Pinout Information

	SPGA-1 & SGA-1 Pinout (PCB versions)	PSGA-2 & SGA-2 Pinout (Autosport Version)	PSGA - CABLE
CN1 Strain Gauge	Square Pad is A	ASL206-05SA (yellow) or ASL006	
5V	A	2	
S1	B	4	
S2	C	3	
GND	D	5	
N/A	N/A	1	
CN3 Power & Coms	Square Pad is A	ASL206-05SN (red) or AS006	
Vin (7-15V)	A	5	red
RX	B	1	blue
TX	C	2	white
Vsig (0-5V)	D	3	n/a
GND	E	4	black
Power			red
GND			blue



Part numbers

PSGA-1	Programmable Amplifier (bare board)
PSGA-2	Programmable Amplifier (with enclosure)
SGA-1	Preset Amplifier (bare board)
SGA-2	Preset Amplifier (with enclosure)
PSGA-Cable	Interface cable for use with software

For Sales Contact:

For technical information contact:



Menard Engine Group
 4034 Park 65 Drive
 Indianapolis, IN 40254
 317-328-9472
 fax 317-329-2974
megsales@menardengines.com